

PARTS LIST						
ITEM	QTY	PART NO.	PART DESCRIPTION	LENGTH	UNIT WT.	NET WT.
1	4	X-MPOST	SUPPORT POST FOR EQUIPMENT PLATFORM ICE BRIDGE KITS		92.99	371.97
2	5	GRS24	24" X 10' GRIP SPAN BRIDGE CHANNEL		87.48	437.41
3	2	X-COV10	10' ANGLE 4" X 4" x 1/4"	120 in	66.32	132.64
4	4	X-MBPB	BACKING PLATE FOR X-MPOST	8 in	8.48	33.90
5	8	X-232698	TRPD-HD SUPPORT PLATE - SITE PRO 1	29 1/2 in	8.72	69.77
6	8	SCP	CLAMP HALF, 1/2" x 5-3/4"		1.29	10.34
7	8	SHCM-T	CHAIN MOUNT TIGHTENER BRACKET	3 in	1.84	14.73
8	4	PC312	3-1/2" FENCE POST CAP		0.59	2.34
9	8	X-124312	1/2" X 2" X 2" ANGLE SPACER; WITH 9/16" HOLE	2 in	0.53	4.26
10	16	G58312	5/8" x 3-1/2" HDG HEX BOLT GR5		0.40	6.41
11	32	G58FW	5/8" HDG USS FLATWASHER	1/8 in	0.07	2.25
12	16	G58LW	5/8" HDG LOCKWASHER		0.03	0.42
13	16	G58NUT	5/8" HDG HEAVY 2H HEX NUT		0.13	2.08
14	16	X-UB1358	1/2" X 3-5/8" X 5-1/2" X 3" GALV U-BOLT		0.77	12.36
15	8	G1203	1/2" x 3" HDG HEX BOLT GR5 FULL THREAD	3 in	0.22	1.74
16	8	G1202	1/2" x 2" HDG HEX BOLT GR5	2 in	0.18	1.41
17	32	G12FW	1/2" HDG USS FLATWASHER	3/32 in	0.03	1.09
18	48	G12LW	1/2" HDG LOCKWASHER	1/8 in	0.01	0.67
19	56	G12NUT	1/2" HDG HEAVY 2H HEX NUT		0.07	4.01
20	20	X-JB8	J-BOLT, 3/8" X 8" X 6" THREADED		0.33	6.61
21	20	SQW38	3/8" SQUARE WASHER (GALV.)	2 in	0.27	5.46
22	20	G38LW	3/8" HDG LOCKWASHER		0.01	0.13
23	20	G38NUT	3/8" HDG HEAVY 2H HEX NUT		0.03	0.68
					TOTAL WT. #	1025.15

#### TOLERANCE NOTES

TOLERANCES ON DIMENSIONS, UNLESS OTHERWISE NOTED ARE:  
SAWED, SHEARED AND GAS CUT EDGES ( $\pm 0.030"$ )  
DRILLED AND GAS CUT HOLES ( $\pm 0.030"$ ) - NO CONING OF HOLES  
LASER CUT EDGES AND HOLES ( $\pm 0.010"$ ) - NO CONING OF HOLES  
BENDS ARE  $\pm 1/2$  DEGREE  
ALL OTHER MACHINING ( $\pm 0.030"$ )  
ALL OTHER ASSEMBLY ( $\pm 0.060"$ )

PROPRIETARY NOTE:  
THE DATA AND TECHNIQUES CONTAINED IN THIS DRAWING ARE PROPRIETARY INFORMATION OF VALMONT INDUSTRIES AND CONSIDERED A TRADE SECRET. ANY USE OR DISCLOSURE WITHOUT THE CONSENT OF VALMONT INDUSTRIES IS STRICTLY PROHIBITED.

#### DESCRIPTION

10' WIDE X 10' LONG COV  
FOR MODULAR EQUIPMENT PLATFORM

CPD NO.	DRAWN BY	ENG. APPROVAL
	CEK 12/5/2016	
CLASS	SUB	DRAWING USAGE
81	02	CUSTOMER

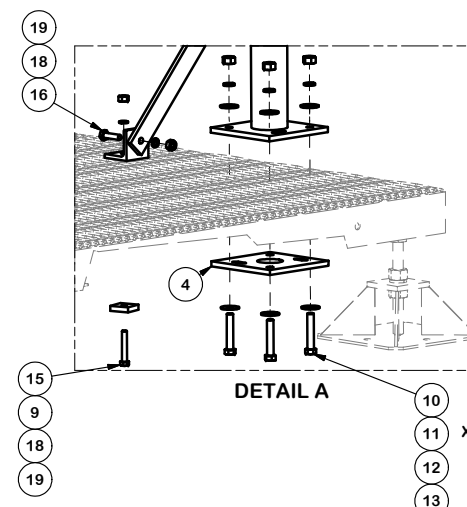
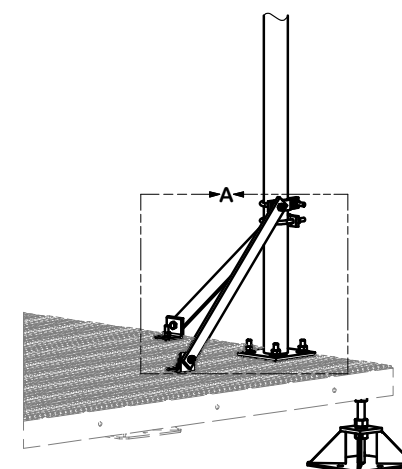
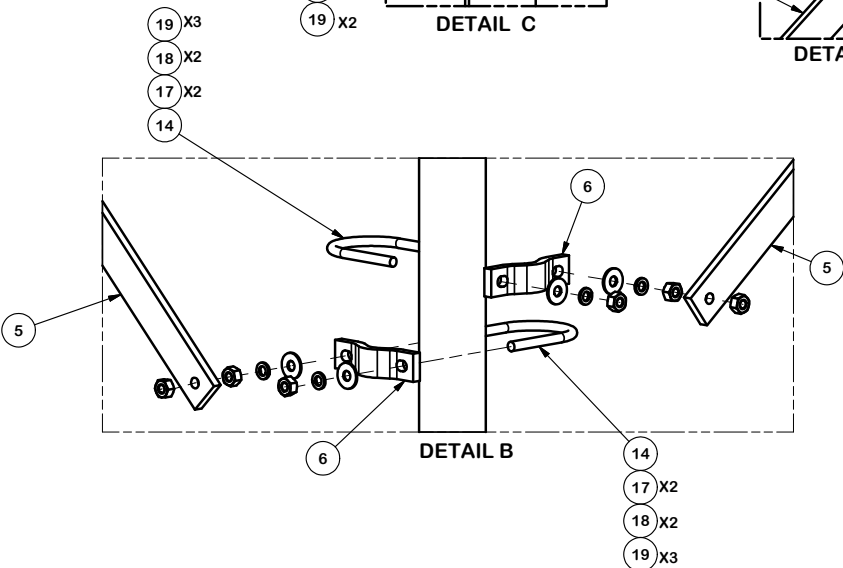
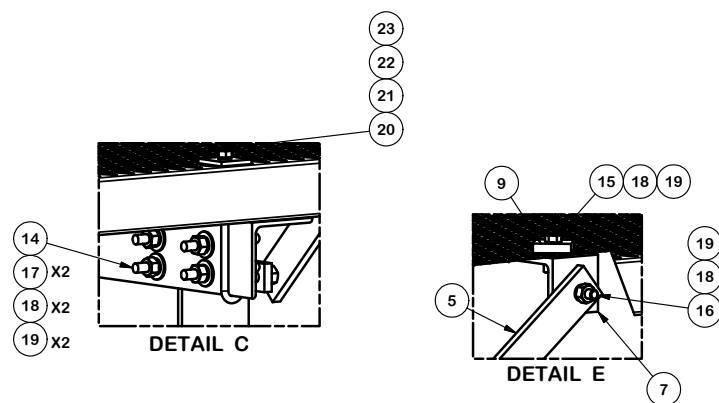


Locations:  
New York, NY  
Atlanta, GA  
Los Angeles, CA  
Plymouth, IN  
Salem, OR  
Dallas, TX

Engineering  
Support Team:  
1-888-753-7446

PART NO.	MPCOV1010	PAGE
DWG. NO.	MPCOV1010	1 OF 3

# ALTERNATE BRACING LOCATION



## TOLERANCE NOTES

TOLERANCES ON DIMENSIONS, UNLESS OTHERWISE NOTED ARE:  
 SAWED, SHEARED AND GAS CUT EDGES ( $\pm 0.030"$ )  
 DRILLED AND GAS CUT HOLES ( $\pm 0.030"$ ) - NO CONING OF HOLES  
 LASER CUT EDGES AND HOLES ( $\pm 0.010"$ ) - NO CONING OF HOLES  
 BENDS ARE  $\pm 1/2$  DEGREE  
 ALL OTHER MACHINING ( $\pm 0.030"$ )  
 ALL OTHER ASSEMBLY ( $\pm 0.060"$ )

PROPRIETARY NOTE:  
 THE DATA AND TECHNIQUES CONTAINED IN THIS DRAWING ARE PROPRIETARY INFORMATION OF VALMONT INDUSTRIES AND CONSIDERED A TRADE SECRET. ANY USE OR DISCLOSURE WITHOUT THE CONSENT OF VALMONT INDUSTRIES IS STRICTLY PROHIBITED.

## DESCRIPTION

10' WIDE X 10' LONG COV  
 FOR MODULAR EQUIPMENT PLATFORM

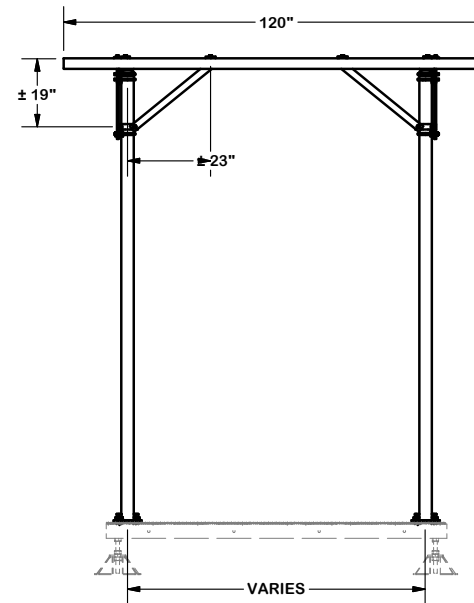
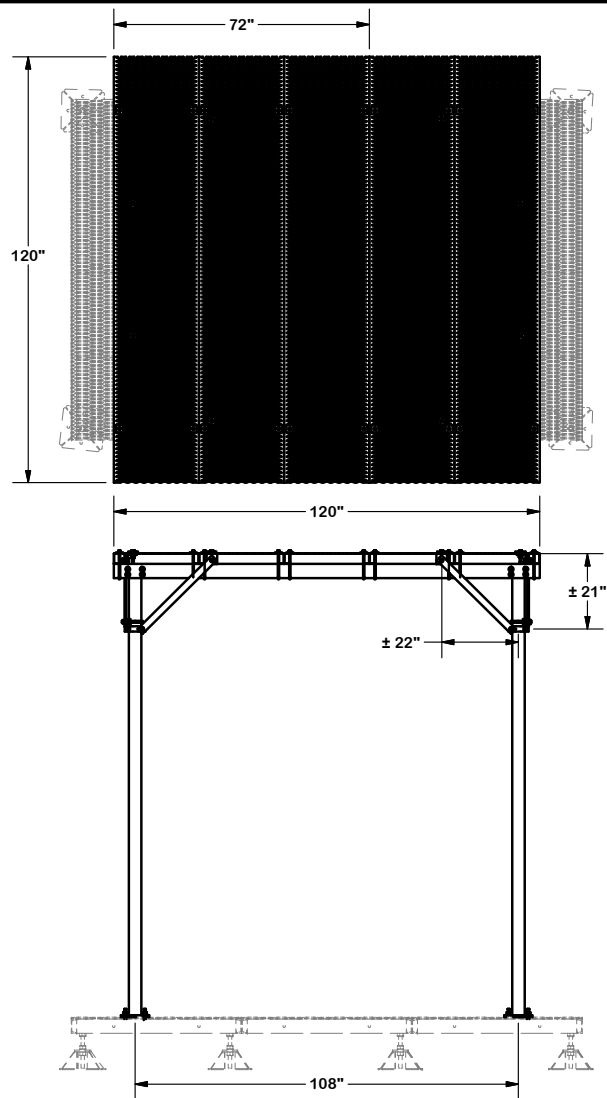
CPD NO.	DRAWN BY CEK 12/5/2016	ENG. APPROVAL
CLASS 81	SUB 02	DRAWING USAGE CUSTOMER
	CHECKED BY BMC 12/9/2016	



Engineering  
 Support Team:  
 1-888-753-7446

Locations:  
 New York, NY  
 Atlanta, GA  
 Los Angeles, CA  
 Plymouth, IN  
 Salem, OR  
 Dallas, TX

PART NO.	MPCOV1010
DWG. NO.	MPCOV1010



#### TOLERANCE NOTES

TOLERANCES ON DIMENSIONS, UNLESS OTHERWISE NOTED ARE:  
 SAWED, SHEARED AND GAS CUT EDGES ( $\pm 0.030"$ )  
 DRILLED AND GAS CUT HOLES ( $\pm 0.030"$ ) - NO CONING OF HOLES  
 LASER CUT EDGES AND HOLES ( $\pm 0.010"$ ) - NO CONING OF HOLES  
 BENDS ARE  $\pm 1/2$  DEGREE  
 ALL OTHER MACHINING ( $\pm 0.030"$ )  
 ALL OTHER ASSEMBLY ( $\pm 0.060"$ )

PROPRIETARY NOTE:  
 THE DATA AND TECHNIQUES CONTAINED IN THIS DRAWING ARE PROPRIETARY INFORMATION OF VALMONT INDUSTRIES AND CONSIDERED A TRADE SECRET. ANY USE OR DISCLOSURE WITHOUT THE CONSENT OF VALMONT INDUSTRIES IS STRICTLY PROHIBITED.

#### DESCRIPTION

10' WIDE X 10' LONG COV  
 FOR MODULAR EQUIPMENT PLATFORM

CPD NO.	DRAWN BY	ENG. APPROVAL
CLASS	CEK 12/5/2016	
SUB	DRAWING USAGE	CHECKED BY
81	CUSTOMER	BMC 12/9/2016



Engineering  
 Support Team:  
 1-888-753-7446

Locations:  
 New York, NY  
 Atlanta, GA  
 Los Angeles, CA  
 Plymouth, IN  
 Salem, OR  
 Dallas, TX

PART NO.	MPCOV1010
DWG. NO.	MPCOV1010